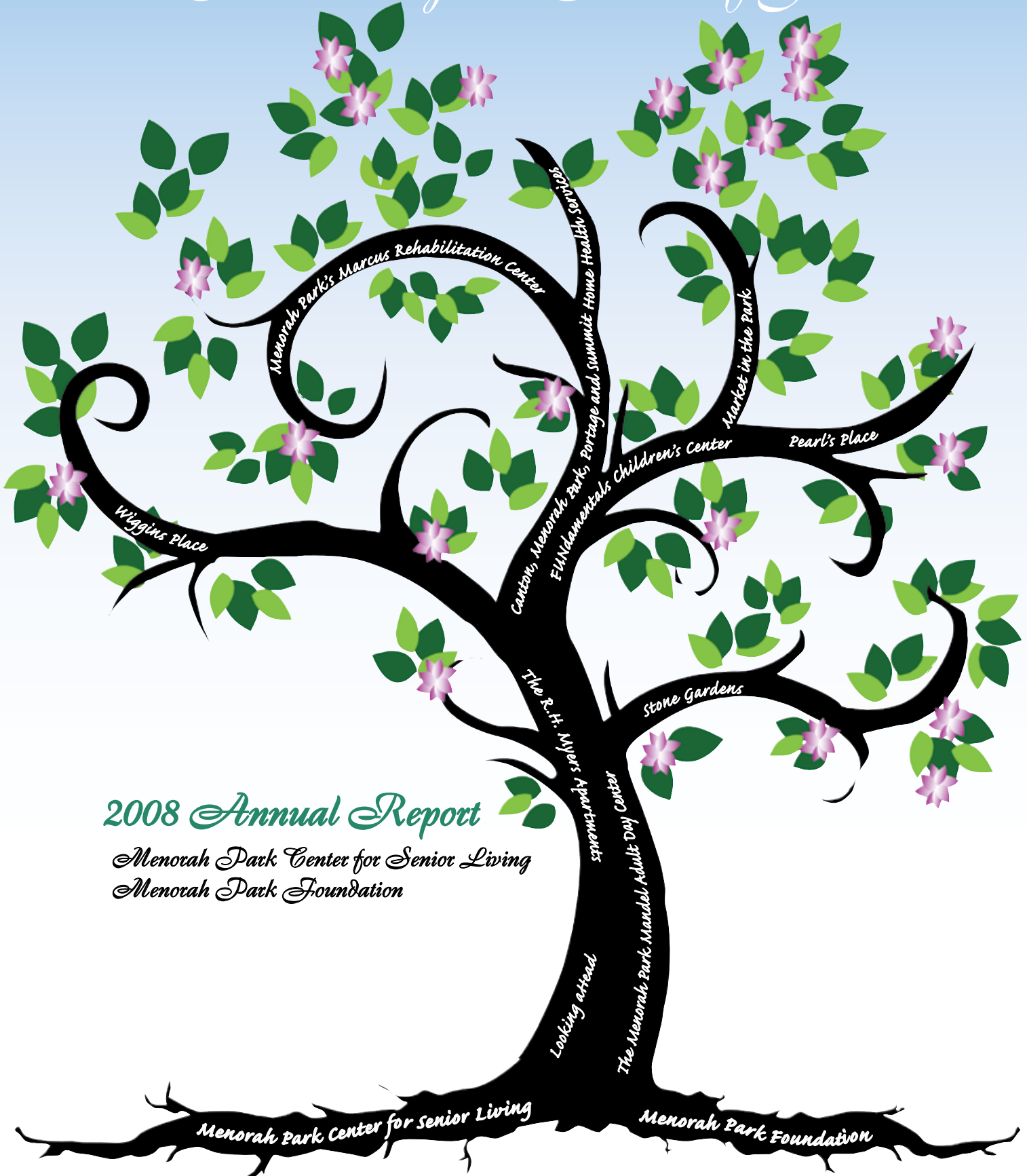


From Believing to Achieving *Nurturing the Seeds of Growth*



2008 Annual Report

Menorah Park Center for Senior Living
Menorah Park Foundation

Menorah Park's Marcus Rehabilitation Center

Home Health Services

Portage and Summit

Children's Center

Market in the Park

Pearl's Place

Wiggins Place

Stone Gardens

The R.H. Myer Center

Adult Day Center

Looking a-Head

The Menorah Park Mandel Adult Day Center

Menorah Park Center for Senior Living

Menorah Park Foundation

Executive Director's Report

Menorah Park Center for Senior Living
Steven Raichilson



Although Menorah Park and the senior care industry may not be in such dire straits as the auto or banking fields, we are definitely impacted by current worldwide financial problems. Two recent events occurred one morning that in different ways, characterize our difficult economic environment.

First, an exuberant campus resident zipped into my office on his electric cart to ask me to take him and a few others to the local racetrack on an upcoming Friday afternoon. When I agreed and joked that he and I pool our money together for betting, \$50 each, he burst out laughing and said he was bringing \$3,000 to the track, not a measly \$50. When I asked him why he would bring such a ridiculous sum to the track, he grinned at first and leaned in with a bit more seriousness saying in his opinion, the track is a safer bet than the stock market!

Shortly after his visit, I read a distressing Wall Street Journal article describing a looming senior care crisis caused by declining revenue and tax receipts at state levels. At least 15 states, according to the article, are targeting major funding decreases for programs that allow low income seniors to receive personal care in their own homes, and in some cases, avoiding more costly nursing home services. While Ohio was not specifically mentioned in the body of the article, it is common knowledge that our state tax revenues are significantly lower and reimbursement for senior services will definitely be affected.

While Menorah Park may not be experiencing service reductions or have fewer clients seeking care, we are not immune or isolated from the hard economic times gripping the nation. A growing number of people residing in our nursing home or enrolled in our community services have greater frailties resulting in higher care costs. Government reimbursement is shrinking while the number of those needing assistance is growing. We expect lower reimbursements from the state for indigent persons in need of necessary care. Philanthropic dollars, which help bridge the gap, will be less as donors deal with their own economic issues. As deliberations begin on the new Ohio bi-annual budget, which will take effect on July 1, 2009, we must actively advocate to our elected state officials that our seniors deserve as much financial support as possible as the new state budget is painfully crafted.

Our business plan of developing new programs for clients with the twin goals of providing necessary new services, and generating additional cash flow for indigent care has been successful in 2008. During the year, we planned a new dialysis center, which is under construction; focused much attention on building a new wing of 43 assisted living apartments at Wiggins Place; and expanded the number of beds devoted to our very successful post-hospital rehabilitation program. We have also started a much needed Hospice Program for our campus, with an outstanding team of staff furnishing support for clients and families in the end phase of life. This new program also generates additional surplus to help cover the cost of care for our clients enrolled in residential or community-based Medicaid programs.

The next several years will be financially challenging for us. The creative energies of our trustees, staff, volunteers and donors will be put to the test as we serve a frailer population with less government support. Solutions to these problems do not lie in simply taking a scalpel to expenses, which in the long term will decrease care, quality, and our reputation. Success will come from thinking out of the box, implementing decisions quickly and taking advantage of business situations before opportunities are lost. Our most valuable assets in these difficult times are not financial. They are the many special people who have devoted their volunteer and professional lives to the success of our organization.

Presidents' Reports

Enid Rosenberg, Menorah Park Center for Senior Living Board of Trustees



"You're not getting older; you're getting better."

"Youth is not a time of life...it is a state of mind."

These quotes are very fitting when describing Menorah Park Center for Senior Living. This year, as we celebrate Menorah Park's 40th anniversary on our Beachwood campus, we all need to take pride in the fact that Menorah Park doesn't look its age. And, it has never operated better!

The uncomplicated secret to Menorah Park's successful aging lies in the title of this year's annual report: "From Believing to Achieving: Nurturing the Seeds of Growth." In other words, cyclical, focused, strategic planning made possible by the partnership of dedicated professionals and lay leaders. This stewardship has cultivated a culture which promotes the ever expanding array of services for seniors who reside on our campus and in the greater community.

Menorah Park is a dynamic agency; an agency driven by "youthful" motivation – constantly moving and adjusting to meet, and to even exceed our own expectations, as well as the expectations of those we serve.

There is always something new and exciting on the horizon. Just look back at our recent Board-Staff Retreat, where we learned about innovative assistive technology designed to help seniors with their activities of daily living.

Just look to the eastern portion of our property at the construction of the CDC, Centers for Dialysis Care building on the Menorah Park campus. And, just look to the near future as we mindfully plan for additional apartments to relieve the crunch of our long waiting lists.

In reality, there have been, and will continue to be many of these very same types of stand-out initiatives. One that I must mention is our Joseph C. and Florence Mandel Adult Day Center (ADC), which on November 19, 2008 celebrated its 40th anniversary!

The ADC, Menorah Park's first community service, is the oldest reported adult day care center in the United States! Mazel Tov to Executive Director Steve Raichilson, ADC Director Judy Shankman, and the entire staff.

I have no doubt that our Menorah Park, as it charges full steam ahead into its second century of service, will continue to plant seeds, nurture their growth and help our community reap the benefits of its mindful and creative planning.

Edwin Z. Singer, Menorah Park Foundation Board of Trustees



Believing. Fourteen years ago, a group of believers helped create the Menorah Park Foundation from its predecessor, the Menorah Park Endowment Fund. Since that time, the Foundation has planted many seeds, nurtured them, and watched them grow.

The Foundation has actively helped Menorah Park achieve its vision. Every year, funds flow through the Foundation to enhance life on campus. The phenomenal growth of those seeds has resulted in a Foundation that contributes to the betterment of residents' lives every day.

Achieving. I am on campus regularly and I see the impact that every donor makes. Whether it is assistance from one of the nearly 200 donor-restricted funds, a gift made because of a singular identified need, for a piece of equipment, or as a contribution to our successful 2008 annual campaign, you make a difference.

Achieving our goals is an ongoing effort. In these tougher economic times, we must take stock of where we are and where we're going. To that end, the Menorah Park Foundation is beginning a strategic planning process to update our vision and provide future direction. I look forward to relaying the results in next year's report. In the meantime, we will keep believing, keep achieving, and keep nurturing those seeds.

I would be remiss if I did not acknowledge that one our first believers and certainly achievers, Foundation director Barbara Gross, retired this past summer. For eighteen years, Barbara planted, nurtured, and grew the seeds that allow the Foundation to impact our campus in so many ways. Thanks, Barbara.

Change always presents new opportunities. I am pleased that Brett Shankman has joined the Foundation as the new director. Brett will be working diligently to ensure the continued growth and success of the Foundation. Welcome, Brett.

Nurturing growth. As the Foundation strives to grow, we are reminded that our needs grow too. We are constantly looking for opportunities to nurture relationships and engage the Menorah Park family in our endeavors. The Foundation and its impact on Menorah Park will grow with you as our partner. Please consider the many ways that you can help plant seeds, nurture and grow them, and then witness the tremendous impact your generosity has on our campus.

Our Mission

Menorah Park Center for Senior Living

Mission Statement

Menorah Park Center for Senior Living enriches the lives of seniors and those requiring specialized high quality health care through direct services, research and education. It does so in a variety of settings in an atmosphere of respect, dignity and caring within a framework of traditional Jewish values.

Vision Statement

Menorah Park Center for Senior Living will be recognized as one of the nation's leading institutions in the advancement of compassionate, innovative and comprehensive healthcare services.

From Believing to Achieving: Nurturing the Seeds of Growth

In everything we do, we seek the potential to sprout, grow and blossom through new ideas, unbounded energies and amazing accomplishments.

Though change offers challenges and growing pangs, we are afforded the courage to embrace our fears and follow our path to the foundation of greatness. Allowing the acorn in all of us to transform into a towering oak should always be at the root of all that we do.

In 1968, community minded trustees, staff and family members had the vision to embrace change, recognizing a move to the City of Beachwood would create new opportunities to better serve our community. It was then that we planted our "acorns" of hopes and dreams for the Menorah Park campus we have become. As our acorns have grown to become majestic oak trees, we have become one campus offering many solutions, serving each individual need, one person at a time.

As our rings of growth spread outwards, we too shall continue to reach outward to continually serve those who need us for many generations to come.

Menorah Park Foundation

Mission Statement

The Menorah Park Foundation is a supporting foundation of Menorah Park Center for Senior Living.

Its sole purpose is to provide financial resources to enable Menorah Park Center for Senior Living to care for the physical, emotional and religious needs of the individuals using its services. Contributions to the Foundation are used for general purposes and specific donor-selected activities.

In fulfilling its role, the Foundation will encourage contributions of immediate and deferred gifts from donors whose personal values and philanthropic goals are in concert with Menorah Park Center for Senior Living.

From Believing to Achieving: Funding the Seeds of Growth

On the following pages, you will read about many of the "seeds" that have become programs and residences at Menorah Park. A sample of the funds is highlighted. Thanks to the generosity of so many people, nearly 200 donor restricted funds have been created.

"The greatest achievements were at first and for a time dreams. The oak sleeps in the acorn."

-James Allen

From Believing to Achieving

Nurturing the Seeds of Growth

On April 9th, 1968, just after breakfast, 220 people were moved from 736 Lakeview Avenue in Cleveland to 27100 Cedar Road in Beachwood. By the time they arrived at their shiny new home and unpacked, they were able to enjoy their lunch in a brand new facility. The flawless transition was the beginning of a new lifestyle for each resident and staff member, which included multiple new programs.

Thanks to the **Ellen & Michael Feuer Fund** for providing general funding for Menorah Park programs.



In the autumn of 1999, the Menorah Park Center for the Aging changed its name to Menorah Park Center for Senior Living, and the Harry and Jeanette Weinberg Pavilion was dedicated. This addition enabled every Menorah Park resident to have a private room.

The **Gertrude K. Glueck End-of-Life Care Education Fund** enables staff to learn about end-of-life care issues.



Stone Gardens Assisted Living opened in 1994 with wellness as its watchword. Residents and their family members are secure in knowing that complete assistance is available to help them manage on their own. Each resident has a choice of a private spacious studio, or a one or a two bedroom apartment. A wealth of services and amenities prevent loneliness and encourage socialization.

The **Hortense Meyer Family Dreams Fund** helps make dreams come true for Stone Gardens residents.



The R. H. Myers Apartments opened in 1979. This marked the beginning of the campus movement into providing residential services in addition to long term care, promoting an independent lifestyle offering conveniences and services to enable tenants to lead healthy productive lifestyles.

The **Jean & Julian Kurlander Memorial Fund** supports tenant activities at The R. H. Myers Apartments.



From Believing to Achieving

Nurturing the Seeds of Growth

Wiggins Place, with its rustic, lodge-like setting and outdoor spaces brought warmth and a natural feel to residential living in 2004. The assisted living community was built on the philosophy of successful aging. Staff is committed to providing a full menu of health and wellness services, enabling each resident to live a balanced and fulfilling life.

Wiggins Place Oneg Shabbatot are made possible through the **Barbara and Richard Schreibman Oneg Shabbat Fund**.



In November, 1968, the Menorah Park Adult Day Center opened its doors. It was a community service created with the goal of offering something for everyone. With individualized programs to meet the unique needs of each client, stimulating activities were made available for adults with memory loss, physical and mental challenges, and social isolation. This year, the Joseph C. and Florence Mandel Adult Day Center (ADC) was authenticated as the oldest in Ohio and most likely in the U.S.

The **Hannah Kline Adult Day Center Fund** helps recognize our wonderful Adult Day Center volunteers.

Looking aHead began in 1995 as a branch of the Mandel Adult Day Center. Persons with brain injuries found hope and healing at the center, along with new-found friendships and daily activities that enhanced their lives.

Thanks to the **Lynn & Barry Chesler Looking aHead Arts & Crafts Fund** for providing art therapy and arts and crafts materials for program participants.



Menorah Park made being well at home a reality by opening our Home Health office in 1995. The staff understands that recovery from surgery, illness or injury is accomplished more quickly when surrounded by loved ones in the comfort of home. There are now offices serving Beachwood, Akron, Canton, Streetsboro and surrounding communities.

FUNdamentals childcare center opened in 1994, allowing staff to relax knowing their precious children were just a few steps away in the care of qualified caregivers, enjoying activities, naps, and meals. Kids from FUNdamentals are able to participate in many intergenerational activities as well, learning the value and wisdom of elders.

The **Libman Family Children's Fund** provides activities, scholarships, programs, and enrichment for the FUNdamentals children.



From Believing to Achieving

Nurturing the Seeds of Growth

Menorah Park began offering short-term post-hospital rehabilitation in 1999. Menorah Park's Marcus Rehabilitation Center resulted from an expansion of a program with a real life rehabilitation suite in 2007 which simulated and addressed the challenges one may find at home.

The **Carol J. & Morton S. Frankel Music Fund** helps enrich and stimulate residents' lives through music therapy.

Pearl's Place Snack Shop and Market in the Park put new life and energy into the campus in 2000, offering a central meeting place to eat, meet, shop, and even play cards. Volunteers offer a cheery hello as clients, staff, family members, and visitors enjoy an ambient room filled with good food and good company.



Annually, the **Gertrude Himmel Adell Volunteer Recognition Fund** honors the commitment of our amazing volunteers.



In 2001, the Peter B. Lewis Aquatic & Therapy Center opened to bring to the community a state-of-the-art, full service aquatic and land-based wellness center complete with a full-sized pool, whirlpools, and specialized walk-in water treadmills for low resistance exercise. The balance and fall prevention, healthy back screenings, and access to fitness and wellness memberships after therapy, along with access to speech and occupational therapies make the Center the go-to place for wellness.

The **Bertha & Abe Kipperman Aquatic Equipment Fund** provides supplies and equipment for the Lewis Aquatic & Therapy Center.

DriveWise, a gift of the Harriet and Sol Roth family, opened on campus in 2007 to assess and to hone the driving skills of those who may need reassurance of their abilities. Computerized simulations help determine reaction times, eyesight and sign recognition. DriveWise offers recommendations to keep the roads, passengers, and drivers safe.

Community collaborations help Menorah Park remain innovative and service-oriented. In 2009, the CDC, Centers for Dialysis Care, will be the newest addition to our campus for the convenience of our residents and community members who may otherwise have to travel longer distances for the dialysis care they need.

Thanks to the **Leonard Rosenberg Foundation**, our dream of a new dialysis center is becoming a reality.

Financial Report

Menorah Park Center for Senior Living

Expenses

Salaries, Benefits & Payroll Taxes	\$ 42,475,857	69.4%
Professional Services	\$ 613,531	1.0%
Supplies	\$ 6,380,188	10.4%
Occupancy, Insurance & Utilities	\$ 4,708,758	7.7%
Interest Expense	\$ 1,622,255	2.7%
Depreciation and Amortization	\$ 3,884,706	6.3%
Other Expenses	\$ 1,537,849	2.5 %

TOTAL **\$ 61,223,144** **100.0 %**

Revenues

Medicaid	\$ 17,494,760	29.2 %
Medicare	\$ 13,566,150	22.7 %
Program Service Fees	\$ 11,811,508	19.7 %
Apartment Rental Income	\$ 4,054,446	6.8 %
Licensed Residential Care Service Fees	\$ 9,091,856	15.2%
Grant Revenue	\$ 621,137	1.0%
Home Delivered Meals Revenue	\$ 607,312	1.0%
Funding from Menorah Park Foundation	\$ 773,283	1.3%
Jewish Community Federation Allocation	\$ 453,569	0.8%
Miscellaneous Revenue	\$ 1,403,701	2.3 %

TOTAL **\$ 59,877,722** **100.0 %**

Program Surplus (Deficit)	(\$ 1,345,422)
Add Back Depreciation, Amortization, etc.	\$ 4,073,727
Deduct Debt Principal Payments, Capital Reserves	(\$ 2,556,980)

Cashflow Surplus **\$ 171,325**

Balance Sheet

Menorah Park Foundation

Statement of Financial Position

Assets

	Year ending June 30, 2008	Year ending June 30, 2007
Investments		
Charitable gift annuity funds	\$ 39,001	\$ 110,686
Other investments	19,996,295	20,704,481
Total Investments	20,035,296	20,815,167
Cash and Cash Equivalents	191,097	149,068
Contributions and Pledges Receivable	58,075	233,464
Equipment, Net	3,968	1,039

TOTAL ASSETS **\$20,288,436** **\$21,198,738**

Liabilities and Net Assets

Liabilities

Charitable gift annuity obligations	\$ 26,302	\$ 77,413
Contribution and accounts payable to Menorah Park Center for Senior Living	82,456	81,139
Accounts payable	12,512	31,893
Accrued wages and vacation payable	25,554	24,046

TOTAL LIABILITIES **146,824** **214,491**

Net Assets

Unrestricted:		
Undesignated	13,661,210	14,358,969
Designated by Board for specific purposes	12,699	33,273
Total unrestricted	13,673,909	14,392,242
Temporarily restricted	6,467,703	6,592,005

TOTAL NET ASSETS **20,141,612** **20,984,247**

TOTAL LIABILITIES AND NET ASSETS **\$20,288,436** **\$21,198,738**

Revenues

Investment gain (loss)	\$ (382,100)	\$ 3,278,319
Change in value of charitable gift annuity obligations	47,254	(3,342)
Contributions and bequests	630,971	1,495,847

TOTAL REVENUES **296,125** **4,770,824**

Expenses

Salaries, wages and benefits	288,953	280,341
Professional and purchased services	31,638	19,229
Supplies	19,742	22,587
Depreciation	747	1,048
Other	27,397	26,815
Contributions to Menorah Park Center for Senior Living	770,283	1,642,152

TOTAL EXPENSES **1,138,760** **1,992,172**

Increase in net assets	(842,635)	2,778,652
Net assets, beginning of year	20,984,247	18,205,595
Net assets, end of year	\$ 20,141,612	\$ 20,984,247

2008 Officers and Board of Trustees

Menorah Park Center for Senior Living

Enid Rosenberg, President*
 Harvey Scholnick, Immediate Past President*,**
 Morton G. Epstein, Vice President*
 Peter Meisel, Vice President
 William Lieberman, Treasurer
 Michael Peterman, Associate Treasurer
 Dr. Robert Binstock, Secretary*
 Steven Raichilson, Executive Director

Marilyn Bedol*	William Lieberman
Alec Berezin*	Marvin Manes*
Nora Krasney Berman*	Greg Marcus
Marilyn Bilsky*	Martin Marcus*
Dr. Robert Binstock*	Ruth Mayers
Erwin H. Blonder**	Peter Meisel
Howard Bobrow	Stanley Meisel*
Dr. Dan Borison	David P. Miller*
Herbert Braun*	Norman Millstein*
Barry Chesler*	Loren Mintz*
Kenneth Cohen	Amy Morgenstern*
Bonnie Cole*	Bonnie Myers*
Howard Danzinger	Dr. Dieter Myers*
Robert D. Deitz**	David Nagusky
Mark Doris	Marjorie Newman
Jackie Elsner ♦	Nathan Oscar**
Dr. Howard Epstein	Terry Ozan
Morton G. Epstein*	Michael Peterman
Goldie Ermine ♦	Irving Rabinsky*
Morton S. Frankel**	Richard Rivitz*
Dr. Saul Genuth*	Dr. Daniel E. Rocker*
Nancy Glick	Amy Rogat
Tiffany Goldstein	Beth Rosenberg
Sally Good*	Enid Rosenberg*
Sidney R. Good*	Betty Rosskamm*
Brent Grover	Gordon Safran*
Becky Heller	Jim Samuels
Harlan Hertz*	William Schechter*
Arthur Hirsh ♦	Harvey Scholnick*,**
Dr. Jack Jaffe*	Richard Schreiberman*
Ira Kaplan	Walter Schwartz
Terri Kline*	Leonard Senkfor
N. Herschel Koblenz*	Michael Shames
Randall Korach	Lawrence C. Sherman**
Roz Krasney	Alvin A. Siegal*
Audrey Kursman*	Eileen Sill*
Jordan R. Lefko*	
Dr. Mark Levine	
Keith Libman*, **	

Marc Alan Silverstein
 Edwin Z. Singer**
 Harry Singer*
 Ivan Soclof*
 Steven D. Soclof
 Mort Stein ♦♦
 Robert L. Stein**
 David Strauss*
 Harriet Warm
 Philip Wasserstrom**
 Steven Weinberg*
 Jerome Weinberger*
 Judith Weiss*
 Dr. Edwin Whitman*
 Steve Wiesenberger
 Jonathon Wise
 Larry Wymor*
 Bennett Yanowitz*

- * Life Trustee
- ** Honorary Trustee
- ♦ Women's and Men's Association Representative
- ♦♦ Akron Representative

Menorah Park Foundation

Edwin Z. Singer, President and Chairman
 Martin Marcus, Treasurer
 Stanley Meisel, Secretary

Norman Adler
 Victor Cohn
 Grant Dinner
 Michael Feuer
 Keith Libman
 Dr. Dieter Myers
 David Nagusky
 Marjorie Newman
 Enid Rosenberg
 Burton Saltzman
 Elliott Schlang
 Harvey Scholnick
 Richard Schreiberman
 Bart Simon
 Philip Wasserstrom
 Judith Weiss

Advisory Committee

Herbert Braun
 Barry Chesler
 Robert D. Deitz
 Mark Doris
 Morton S. Frankel
 Brent Grover
 N. Herschel Koblenz
 Jordan R. Lefko
 Ruth Mayers
 Gordon Safran
 Leonard Senkfor
 Michael Shames
 Lawrence C. Sherman
 Ivan Soclof
 Robert L. Stein
 Harriet Warm
 Steven Wiesenberger

Staff

Brett Shankman
Director

Carol Wolf
Assistant Director

Audrey Katzman
 Donna Starkman
Administrative Assistants

Menorah Park Center for Senior Living

Board Committees and Chairpersons

Admissions	Marilyn Bilsky
Audit Committee	Barry Chesler
Budget & Finance	William Lieberman
Community Services	Ira Kaplan
Enhanced Housing	Peter Meisel
Executive	Enid Rosenberg
Forward & Strategic Planning	Terry Ozan
Government Relations	Jim Samuels
House and Properties	Michael Peterman
Leadership Development & Nominating	Terri Kline
Long-Term Care	Marilyn Bilsky
Public Relations & Marketing	Sid Good
R.H. Myers Apartments Management	Howard Bobrow
Religious Affairs	Alec Berezin
Research	Dr. Robert Binstock
Special Events	Ruth Mayers
Stone Gardens Management	David Nagusky
Wiggins Place Management	Nora Krasney Berman



Executive Staff

Steven Raichilson	Executive Director
Richard Schwalberg	Administrator
Gloria Levine	Associate Administrator
Robert Agrast	Director of Campus Nutrition
Melissa Altman	Director of Children & Youth Services
Lois Brodeur	Utilization Review Coordinator
Merri Bunge	Director of Education
Lisa Cohen-Kiraly	Director of Social Work
Stewart Collins	Administrator, The R.H. Myers Apartments
Lee Cook	Administrator, Menorah Park Home Health Services
	Administrator, Portage Home Health Services
Jamie Herbst	Director of Human Resources
Rabbi Ephraim Karp	Director of Religious Affairs
Dr. Michael Knight	Medical Director
Cheryl Kraig	Associate Director of Nursing
Perri Kushan	Executive Dietician
Paul Lieber	Administrator, Wiggins Place
Barbara Marcelletti	Director of Nursing, Menorah Park Home Health Services
Pam Nicholson	Director of Activities
Ruth Plautz	Director of Rehabilitation Services
Robert Schaefer	Chief Financial Officer & Controller
Brett Shankman	Director of the Menorah Park Foundation
Judy Shankman	Director of the Menorah Park Mandel Adult Day Center
Beth Silver	Director of Public Relations & Marketing
Vicki Snyder	Director of Volunteers
Cheryl Sundheimer	Administrator, Canton Home Health Services
Denise Trun	Director of Nursing
Sandra Valtman	Director of Health Information
Ross Wilkoff	Administrator, Stone Gardens
Teresa Williams	Administrator, Summit Home Health Services

Affiliations

Educational Affiliations

Baldwin Wallace
Case Western Reserve University
CEVEC (Cuyahoga East Vocational Education Consortium)
Cleveland Clinic Health Systems
Cleveland Institute of Dental and Medical Assistants
Cleveland State University
Cuyahoga Community College
Elderhostel Institute Network
Hiram College
John Carroll University
Kent State University
Malone College
Northeastern Ohio Universities College of Medicine
Ohio University College of Medicine
University Hospitals Health Systems
University of Akron
Uruline College

Menorah Park Memberships and Organizational Affiliations

Anthem
Akron Jewish Community Federation
American Association of Homes and Services for the Aging
Association of Jewish Aging Services
Association of Ohio Philanthropic Homes for the Aging
Association of Professionals in Infection Control
Centers for Medicare & Medicaid Services
Cleveland Clinic Health Systems
Cleveland Growth Association
Cleveland Jewish Genealogy Society
Conference of Jewish Communal Services
Federation for Community Planning of Cleveland
Gerontological Society of America
Government Affairs Committee of Ohio Jewish Communities
Jewish Community Federation of Cleveland
Jewish Family Service Association - B'nai Brith Women - Home Delivered Meals Program
Kaiser
Medical Mutual
MetroHealth System
National Institute on Aging
National Institute of Mental Health
National Nursing Staff Development Organization
Ohio Assisted Living Association
Ohio Bureau of Workers' Compensation
Ohio Council for Home Care
Orthodox Rabbinical Council of Cleveland (*Merkaz Harabonim*)
U.S. Department of Health & Human Services - Certified as an Extended Care Facility for Medicare
U.S. Department of Housing & Urban Development
U.S. Department of Veterans Affairs
Union of Orthodox Jewish Congregations of America
University Hospitals Health Systems
Western Reserve Area Agency on Aging

Menorah Park Center for Senior Living

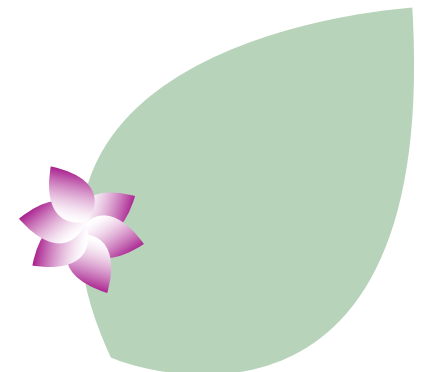
A senior living campus where a full continuum of long-term and community-based care and services are provided

Residential Services

Menorah Park – Comprehensive nursing home offering long-term and post-hospital subacute rehabilitation
Stone Gardens – Assisted living
The R.H. Myers Apartments – Independent and catered living
Wiggins Place – Assisted living

Community Services

The Menorah Park Mandel Adult Day Center – Daily enrichment programming in a club setting
The Peter B. Lewis Aquatic & Therapy Center – Warm-water and land-based outpatient therapy
Balance and Motion Therapy – Fall prevention therapy
DriveWise – Assessment, training and safety program for the aging driver
Gilroy Fitness and Wellness Center – Personalized exercise programs
Housekeeping Plus – Light housekeeping and heavy cleaning service
Looking aHead – Community brain injury re-entry program
Myers Research Institute – Specializing in geriatric research
Menorah Park Home Health Services – Skilled nursing and personal care in your own home
Menorah Park's Marcus Rehabilitation Center – Post-hospital inpatient short-term rehabilitation
Menorah Park Outpatient Services – Occupational, Physical and Speech therapies
Portage Home Health Services – Care at home in Portage County communities
Summit and Canton Home Health Services – Care at home in the Akron/Canton communities



Donor Restricted Funds

Resident Activity Funds

Dr. and Mrs. Charles Adelstein Memorial Fund
Joanne & Robert Balantzow Cultural Arts Fund
Martha B. & Robert H. Binstock New Year's Eve Party Fund
Clare Lader Bookhalter Resident Entertainment Fund
Phyllis & Bernard H. Burkons Entertainment Fund
Frieda & Toby Chisling Summer Ice Cream Fund
Matilda & Morton P. Cohn Fund
Sanford Cohn Resident Entertainment Fund
Marcy & Richard M. Cowan Clown Fund
Sherry & Jeffrey Epstein Father's Day Fund
Good Times Off Campus Fun/d
Hortense & Samuel Havre Memorial Fund
Marcella Katz High Tea Fund
Belle Kaufman Mother's Day Fund
Frances & Stanley Kohn Theater Fund
David J., I. Ronald & Jan S. Moskowitz Resident Outings Fund
Bonnie & Dieter Myers Young Artists Fund
David N. Myers Men's Club Fund
Lenore & Nathan Oscar Birthday Fund
Mamie & Solomon Rehmar Resident Outings Fund
Peggy & Philip Wasserstrom Fund
Joy & Jerry Weinberger Musical Fund
Nellie R. Weiss Dance Performance Fund

General & Special Purpose Funds on the Menorah Park Campus

Gertrude Himmel Adell Volunteer Recognition Fund
Leonard S. Becker Memorial Fund
Joyce & Mel Bernzweig Bagel Brunch Fund
Marilyn & Jeffrey Bilsky Baking Fund
Philip L. Danzinger Memorial Medical Fund
Ellen & Michael Feuer Fund
Lena & Dave Friedman Memorial Fund
Sadie & Maurice Friedman Fund
Gertrude K. Glueck End-of-Life Care Education Fund
Daniel Goodman Memorial Fund
Regina & Leo Goodman Audio Library Memorial Fund
Candy & Brent Grover Family Special Projects Fund
Dr. Arnold L. Heller Memorial Fund
Florence Hurwitz Memorial Fund

Senta & Sol Kahn Holocaust Education Fund
Roz & Marty Kaufman Arts and Crafts Fund
Maxine L. & N. Herschel Koblenz Fund for Personal Companionship
Shirley P. & Sanford Kutash Bagel Brunch Fund
Jennie & Milton S. Lipson Memorial Fund
Ruth & Louis L. Manes Fund
Barbara & Stanley A. Meisel Life Enrichment Fund
Myrtle & Lewis Miller Memorial Fund
Morgenstern Family Applied Research Fund
David & Inez Myers Memorial Research Fund
Nutrition Services Employees' Recognition Fund
Rose Persky Special Needs Fund
Sylvia & Robert Reitman Nature Center Fund
Judy & Marvin Ritzenberg Flower Fund
Jackie & Norton Rose Computer Software Fund
Enid & David Rosenberg Dream Fund
Eda & Louis Rosenkowitz Fund
Margo & Robert Roth Fund
Ruth Blatt Ruben Fund
Shirley Rubin Beauty Shop Fund
Frances & Jerry Sacks Memorial Fund
Melvin D. Sacks Memorial Fund
Barbara & Richard Schreiberman Grandchildren's Arts and Crafts Fund
Melvin J. Singer Fund
Naomi & Edwin Z. Singer Fund
Marilyn & Ivan Soclof Academy Awards Fund
Dora & Harry Solganik Resident Special Needs Fund
Florence Stanford Memorial Fund for Patient & Resident Care
Irving I. Stone Leadership Award Fund
Florence & Edward Weinberger Enrichment Fund
Myra & Howard Whitelaw Celebration of Life Fund
Bertha E. & David Wiggins Resident's Advocate Fund
Edward & Rosalind Goldberg Wiletzky Memorial Fund
Jean & William J. Wilkoff Judaic Art Fund
Sheridan Winkelman Comfort Care Fund
Estelle & Allen Wolfe Athletic Activities Fund
Elinor & Larry Wymor Jam & Jelly Fund
Illein and Hans Youngman Floral Fund

Special Purpose Funds at The R.H. Myers Apartments

Bonnie Harshman Cole & Michael Cole Father's Day Fund
Deitz, Goldenberg & Aronoff Mother's Day Fund
Leah & Albert Frankel Playground and Garden Fund
Goldie and Max Glanz High Tea Fund
Tillie Gutterman Distinguished Employee Award Fund
Kline Family Senior Prom Fund
Eda Tannenbaum Kochman Israeli Programming Fund
Jean & Julian Kurlander Memorial Fund
Lieberman Family Outings Fund
Miriam and Jack Manas, Helen and Ronald Ross Educational Fund
R.H. Myers Endowment Fund
Esther Pollock Knitting Nannies Fund
Rogat Family Fund
Mollie Ross Music Fund

General & Special Purpose Funds at Stone Gardens

Raye & Morris Blane Activities Fund
Helen and Herb Braun Father's Day Fund
Sadie Fisher Park Fund
Mollie & Charles Goodman Outings Fund
Blanche Gordon Employee of the Year Fund
Barbara Gross Entertainment Fund
Barbara and Stanley Meisel Art Studio Fund
Hortense Meyer Family Dreams Fund
Arlene Munitz & Linda & Lawrence Rich Family Jewish Holiday Fund
Sylvia & Michael Piccus Garden Fund
Rena "Mimmi" Reich Fund
Larry Reiss Men's Club Fund
Morris, Zelda & Esther Rice New Year's Eve Fund
Schnerb & Sokol Family Reform & Conservative Services Fund
Sheryl & Bart Simon Mother's Day Fund
Sylvia Swerdlow Memorial Fund
Laya & Leonard Tanenbaum Good Times Fund
Esther G. & Joseph S. Weil Entertainment Fund
Weisz Family Mitzvah Corps Fund
Estelle Wolfe Floral Fund

General & Special Purpose Funds at Wiggins Place

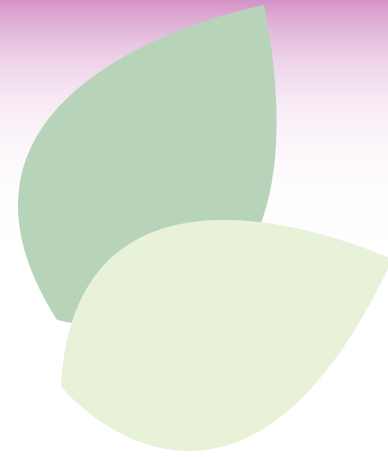
Walter L. Abt Gardening Fund
Bilsky Family "It Can Be Done" Fund
Sharon & Bruce Epstein Wellness Fund
Guten Jewish Learning & Culture Fund
Minda S. & Jack W. Jaffe Father's Day Fund
Doreen Kearschner Life Enrichment Fund
Terri & Stuart Kline Wiggins Place Senior Prom Fund
Arlene & George Leventhal Card Fund
Peggy Markey Activities Fund
Lois & Bruce Rosenblum Family Music Fund
Mildred Saltzman Mother's Day Fund
Barbara & Richard Schreiberman Oneg Shabbat Fund
Shames Family Holiday and Special Events Fund
Ida & Herman Weinberg Jewish Holiday Fund
Alice & Hy Wyner Fund

General & Special Purpose Funds at The Menorah Park Mandel Adult Day Center

Fannie & Edward Baker Cultural Enrichment Fund
Lynn & Barry Chesler Looking aHead Arts & Crafts Fund
Martha F. & Barney E. Fields Adult Day Center Fund
Jene M. Halpert Fund
Hannah Kline Adult Day Center Fund
Sacks Family Activities Fund

Highlighted funds are new in 2008.

Donor Bill of Rights



Children & Youth Services Funds

Marilyn & Marshall Bedol Youth Special Needs Fund
Lynne & Robert Friedman Children's Scholarship Fund
Muriel & Irving Ginis Children's Fund
Anne S. Greenfield Grandchildren's Fund
Huntington National Bank Fund
June Isquick Intergenerational Fund
Bella & Albert Korman Children's Outings Fund
Roz & Sam Krasney Teen Philanthropy Fund
Libman Family Children's Fund
Shirley & Marvin Newmark Joy of Parenting Fund
Elaine and Harold Resnick Children's Fund
Senkfor Family Intergenerational Program Fund
Lois Sherman Children's Fund
Simon Family Children's Fund
Norman Spero Day School Visits Fund
Marjorie & Robert L. Stein Junior Volunteer Fund
Celia & Rudy Wangrow Children's Fund

Gardening and Garden Maintenance Funds

Sylvia & Leonard Becker Intergenerational Garden Fund
Nettie & Herbert Borstein Garden Fund
Emma & Meyer Bruder Fund
Lillian & George Goodman Gardening Fund
Edna & Nat Marcus Garden Fund
Margaret & Carl Rosenberg Garden Fund
Harriet & Sol J. Roth Family Garden Fund
Enid & Stanley Rothenfeld Memorial Fund
Edith B. & Alvin O. Schreibman Garden Fund

Jewish Holiday & Religious Events Funds

Eva & Daniel Beckerman Kiddush Fund
Nora & Brian Berman Yom-ha Atzma'ut Fund
Barbara & Bob Brenner Break-the-Fast Fund
Milton I. & Diana R. Davis Orthodox Religious Programming Fund
Lillian H. & Henry S. Dennis Religious Activities Fund
Mary & Philip Edlis Religious Activities Fund
Kraus-Grossman Family Passover Fund
Edith & Joseph Margolis Torah Study Fund
Sylvia & Charles Perkol, Ross & Siegel Family Prayer Book Fund



Judy & Marvin Ritzenberg Flower Fund
Hirsh Rivitz Family Reform-Conservative Services Fund
Leona and Bert Rosenbluth Passover Fund
Safran Family Reform-Conservative Services Fund
Scholnick Family Holiday Entertainment Fund
Lucille & Seymour Stein Purim Fund
Irving Stone Rabbinic Fund
Faye & Norman Waxman Orthodox Religious Programming Fund
Weiss Family Hanukah Fund
Alma and Justin Zimmerman Kiddush Fund

Human Resources & Staff Award Funds

Esther & Milton Berman Family Nursing Assistants Appreciation Fund
Gilda Bram Employee Emergency Loan Fund
Sally Roth Cohen Staff Spirit Award Fund
Lena Kaufman Resident Kindness Fund
Irving Kurtz Memorial Scholarship Fund
Milton W. Paley Memorial Fund
Melvin D. Sacks Memorial Fund
Spector-Garber Family Fund
Steiger Family Fund for Staff Enrichment
Yetta Sustin & Goldie Rashkow Distinguished Nursing Award Fund
Florence Azoff Wish Professional Service Award Fund

Rehabilitation & Therapy Funds

Eileen Cohen Aquatic Therapy Fund
Carol J. & Morton S. Frankel Music Fund
Bertha & Abe Kipperman Aquatic Equipment Fund
Dr. Samuel & Rosa Lobe Memorial Fund
Clara Poulsen Fund
Enid & David Rosenberg Rehabilitation Equipment Fund
Ruth & Chuck Schaul Rehabilitation Fund
Thompson Family Education Fund
Bubbles & Ed Whitman Resident Mobility Fund

Highlighted funds are new in 2008.

The Menorah Park Foundation subscribes to a Donor Bill of Rights.

Philanthropy is based on voluntary action for the common good. It is a tradition of giving and sharing that is primary to the quality of life. To assure that philanthropy merits the respect and trust of the general public, and that donors and prospective donors can have full confidence in the not-for-profit organizations and cases they are asked to support, we declare that all donors have these rights:

- I. To be informed of the organization's mission, of the way the organization intends to use donated resources, and of its capacity to use donations effectively for their intended purposes.
- II. To be informed of the identity of those serving on the organization's governing board and to expect the board to exercise prudent judgment in its stewardship responsibilities.
- III. To have access to the organization's most recent financial statements.
- IV. To be assured their gifts will be used for the purposes for which they were given.
- V. To receive appropriate acknowledgment and recognition.
- VI. To be assured that information about their donations is handled with respect and with confidentiality to the extent provided by law.
- VII. To expect that all relationships with individuals representing organizations of interest to the donor will be professional in nature.
- VIII. To be informed whether those seeking donations are volunteers, employees of the organization or hired solicitors.
- IX. To have the opportunity for their names to be deleted from mailing lists that an organization may intend to share.
- X. To feel free to ask questions when making a donation and to receive prompt, truthful and forthright answers.

*Developed by:
American Association of Fund Raising Counsel. (AAFRC)
Association for Healthcare Philanthropy (AHP)
Council for Advancement and Support of Education (CASE)
Association of Fund Raising Professionals (AFP)*

Thank You to Our 2008 Annual Campaign Donors

AAA Pipe Cleaning Corporation
Rosalyn & Norman Adler
Brenna & Bob Agrast
Abbie Akst
Alco
Alpha Office Products
American Alert Corporation
American Data
America's Best Medical/Lincare
Florence & Jerome Arberman
Christine & Dennis Aster
Norma & Irving Barron
Joyce & George Becker
Marilyn & Marshall Bedol
Anna & George Benedikt
Joyce & Alexander Bentsman
Michael Benza & Associates
Marcia & Alec Berezin
Nora & Brian Berman
Stanley Bernath
Rece Biales
Cheryl & Vince Bianchi
Marilyn & Jeff Bilsky
Martha & Robert Binstock
Jeannette & Morris Bir
Deborah & Howard Bobrow
Bonezzi Switzer Murphy Polito & Hupp
Susan & Dan Borison
Genny & Adam Brakas
Helen & Herb Braun
Gertrude Brenner
Leah Brenner
The Brickman Group, Ltd.
Lois & Stephen Brodeur
Carol & Harvey Brodsky
Dr. & Mrs. Stanley L. Brown
Molly Brudnick
Asya Bunina
Irene & Robert Burkhart
Elaine & Robert Chaplin
Lynn & Barry Chesler
Debby & Kenneth Cohen

Lisa & William Cohen-Kiraly
Ellen & Vic Cohn
Bonnie & Michael Cole
Joseph Cole
Carol & Stewart Collins
Sol S. Comet
Lee & Michael Cook
Liza & Larry Coven
Marcy & Richard M. Cowan
Doris & Marvin Cramer
Dairymens
Judy & Howard Danzinger
Stephanie & Jeffrey Danzinger
Shirley & Leonard Davis
Sallie & Robert Deitz
Clara Dick
Bernice & Bruce Dinner
Jennifer & Grant Dinner
Diversified Piping & Mechanical
Fran & Mark Doris
Rebecca Eden
Toby & Steve Eisenberg
Electrical Appliance Repair Service
Jackie & Edwin Elsner
Pamela and Ronald Ennis
Esther & Bernard Epstein
Howard Epstein & Gregg Levine
Natalie & Mort Epstein
Sharon & Bruce Epstein
Erie Reproduction Service
James A. Fein
Frances Feiner
Joseph Felber
Barry Feldman
Feren Fruit & Gift Baskets
Michael & Ellen Feuer
Findley Davies
Ruth & Alvin Fisher
Sherry Fixler
Flavor Fresh Juices
Susan & Adam Fleischer
Emily Fleisher
Elaine & Robert Frank
Carol & Morton Frankel

Mildred Fromet
Jack Galvin
Lois Gaynor
Gem Electric
Molly & Saul Genuth
Vivian & Hyman Gildenhorn
Irving Ginis
Laurie & Stephen Girsky
Donna & Les Glazer
Nancy Glick & Randy Solomon
Beverly & Dick Gold
Marguerite Goldfarb
Madeline Goldstein
Tiffany & Josh Goldstein
Sally Good
Sidney Good
Gail & Sheldon Goodman
Evy & Larry Gordon
Joyce Gordon
Ruth & Howard Gordon
Lisa & Fred Greenstein
Helen & Sheldon Gross
Candy & Brent Grover
Esy Gurevich & Solomon Rabinovich
Michael Gutowitz
Hahn Loeser & Parks LLP
Cathy Sue Hancock
Elsie Handler
Peter Hasek Glass Company
Hastings Water Works
Charlee & Richard Heimlich
Tammy & Robert Heksch
Becky & David Heller
Carolyn & Jim Herman
Sol Herman
Sheila & Gerald Herschman
Hillcrest Ambulance Services
Sylvia & Alex Hirschler
Cornelia Hodgson & William Dorsky
Lee Ann Holstein
Jane & Michael Horvitz
Howard, Wershbaile & Co.

Marilyn & Keith Jacobs
Minda & Jack Jaffe
Ronnie Jankoff
Stephanie & Rob Jay
Suzanne Simon & Bill Johnston
Jordan Construction
Lola & Melvin Kamins
Brian Kane
Marilyn Kanter
B. Jean Kaplan
Amy & Ira Kaplan
Sarah & Rabbi Ephraim Karp
Audrey Katzman
Judy & David Kaufman
Rosalyn Kaufman
Renee & Stan Keller
Adelle & Alvin Kendis
Nathalie Kirlik
Joan Kleinman Kirschner
Sandra Klee
Esther Klein
Evelyn Klein
Jay Klein (z"l)
Judith & Larry Klein
Phyllis Klein
Dolores & Jim Kleinman
Marcia & Ernest Kline
Terri & Stuart Kline
Judith & Fred Klotzman
Kelly & Michael Knight
Maxine & Hersch Koblenz
Nancy & Rik Kohn
Irving W. Konigsberg
Jennifer & Randy Korach
Elaine & David Kornswiet
Selma Kottler
Rosalind Krasney
Adeline & Alvin Krenzler
Gloria Kretsch
Paul Kroh, Inc.
Eleanor Krongold
Audrey Kursman
Shirley & Sanford Kutash
Nechama & Rabbi Howard Kutner

Elayne & Robert Kwait
Rose & Daniel Lash
Lax & Mandel Bakery
Jane & Jordan Lefko
Reeva & Lawrence Lettofsky
Marsha & Robert Levin
Gloria Levine
Phyllis Levine
Teri & Mark Levine
Louise Levy
Pearl & Alvin Lewis
Nancy & Keith Libman
Ida Lichtiger
Kim & Paul Lieber
Sandra & Bill Lieberman
Earl Linden
Betty Link
Littler Mendelson, P.C.
Mildred & Dennis Lyons
Caroline Majewski
Shirley & Irwin Mannis
Lois & Marty Marcus
Shelley & Gregory Marcus
Lynn & Robert Markus
Virginia & Robert Maver
Ruth & Doug Mayers
McHenry & Associates
Medical Mutual of Ohio
Meisel Family Foundation
Susan & Peter Meisel
Meritech
Francine Mesnick
William Mestek
Lillian Milder
Patti & John Milford
David P. Miller
Rebecca & Richard Miller
Norman Millstein
Florence & Dennis Mitchell
Steve Monto
Christine & Brad Morsch
John E. Moss, Jr.
Bonnie & Dieter Myers
Sheila & Gary Myers

Arlene & Robert Myotte
Helen & David Nagusky
Susan & Robert Namen
Adele & Philip Neshkin
Marjorie & Arthur Newman
Mary Nicholls
Lenore & Merton Nolish
Omnicare Lomed Pharmacy
Grace Ordin
Lenore & Nathan Oscar
Kathy & Terry Ozan
Wendy & Mark Pace
Ethel Paley
Jane T. Pearson, Lois Pearson Roberts & Gerald Pearson
Perkins Eastman Architects, P.C.
Barbara & Michael Peterman
Theodore Pinkston
Pioneer Environmental Systems
Plantscaping
Shirley Platzner
Pollak Food Distributors
Roslyn & Myron Pollock
Pro-Tect Maintenance
Lori & Steve Raichilson
Regal Carpet Center
Elaine Rembrandt & Rabbi Daniel Roberts
Rosalind & Lou Resnick
Gertrude Rice
Melanie & Robert Richards
Judy & Marvin Ritzenberg
Joan & Rick Rivitz
Elaine & Daniel Rocker
Amy & Ken Rogat
Douglas Rolfe
Carol Ronder
Jean Rosenbaum
Beth & Frank Rosenberg
Enid & David Rosenberg
Betty Rosskamm
Harriet Roth
Shelley Roth & Bruce Schwartz

2008 Annual Campaign Donors (cont.)

Phyllis Rotman
Susan & Steve Rubin
Charles Sacks
Evie & Gordon Safran
Judith & Burton Saltzman
Jim Samuels
Edward Sandman
Gloria & Robert Schaefer
Rosella & Walter Schendel
Susan Schermer
Gail & Elliott Schlang
Diane & Harvey Scholnick
Carole & Alan Schonberg
Manny Schor
Barbara & Richard Schreibman
Linda & Stuart Schulhof
Carol Levinthal & Richard
Schwalberg
Paula & Walter Schwartz
Ruth Schwartz
Secure Care Systems
Margaret & Edward Segel
Katherine Selman
Senkfor Family Foundation
Service-Tech Corporation
Shaker Auto Lease
Katie & Michael Shames
Mary Ann & Gary Shamis
Judith & Harvey Shankman
Marcy & Brett Shankman
Charles Shanks
Louise Shapiro
Lawrence Sherman
Elvin Shultz
Alvin & Laura Siegal Foundation
Eileen & Robert Sill
Beth & Michael Silver
Rhoda & Alan Silver
Pauline Silverman
Marc Alan Silverstein
Sheryl & Bart Simon
Geri & Harry Singer
Naomi & Edwin Z. Singer

William Singer
Ada Slavin
Harold & Shirley Smith
Snavelly Construction
Vicki & Richard Snyder
Marilyn & Ivan Soclof
Michal & Steven Soclof
Carol & Irwin Sokol
Jean Solomon
Bertha & Julian Solonitz
Source Diagnostics
Sheila & Ronald Spaeth
Sparkle Wash
Speed Exterminating
Florence & Gerald Spero
Shirley Spitalny
Marsha & Jim Spitz
Karen & Daniel Steiger
Geraldine & Morton Stein
Marilyn & Robert Stein
Terri & Howard Steindler
Stellar Private Cable Systems
Brian Stern
Dorothy Stoller
Penny & David Strauss
Cheryl Sundheimer
Sysco Food Services of Cleveland
Florine & Ernest Tallisman
Mary & Justin (z"l) Teichman
Lois Teitelman
Tibor's Kosher Meat Market Inc.



Tom Schaefer Plumbing
Trimark SS Kemp
Unger's Kosher Bakery
Tom Valore
Sandie & Thomas Valtman
Beatrice Wahl
Janice Wallach
Harriet Warm & Richard Blum
Peggy & Philip Wasserstrom
Rhea Waxman
Aaron Weinberg
Penni & Stephen Weinberg
Joy & Jerry Weinberger
Lita & Marshall Weinstein
Dolores Weisberg
Eleanor Weisman
Judy & Morry Weiss
Leo Weiss
Margaret & Asher Weiss
Sylvia Wiener
Trudy & Steven Wiesenberger
Diane & Ross Wilkoff
Sally Winger
Nancy Winkelman & Jeremy
Shapiro
Cheryl Davis & Jonathan Wise
Carol & Michael Wolf
Wolf Family Foundation
Elaine Wolfe & Linda Mackey
Elinor & Larry Wymor
Donna & Bennett Yanowitz

*z"l of blessed memory
We regret the inadvertant
ommission of any names.*

**“ To accomplish great things,
we must not only act, but
also dream; not only plan,
but also believe. ”**

-Anatole France

Menorah Park Center for Senior Living Guiding Principles

EXCELLENCE

- Excellence is our standard for performance.
- Continuous improvement in all areas is encouraged and expected by supervisors and managers.
- Everyone is accountable for meeting well-defined expectations and achievable performance goals.
- Have well-maintained buildings, furnishings and grounds.
- Embrace business philosophy that emphasizes prudent use and oversight of resources, revenue enhancement and fiscal stability.
- Ensure safety and security of clients, staff and guests.

RESPECT

- Promote a culture where everyone is treated with dignity and respect.
- Understand and acknowledge the needs and perspectives of everyone.
- Regard and value contributions and recognize accomplishments.
- Model our behavior on honesty, integrity and moral ethics.
- Clients and families are our highest priority.

PARTNERSHIP

- Fulfill our mission through cooperative relationship between Board of Trustees, staff, residents, their families, volunteers, donors and the community.
- Maintain open lines of communication among staff and those we serve.
- Enable all who serve to do so to the best of their ability.

LEARNING

- Expect and encourage continuous learning.
- Continually explore ever-changing needs of our community.
- Endorse research as an essential element of our organization.
- Learn from all experiences.



Menorah Park Center for Senior Living
27100 Cedar Road
Beachwood, Ohio 44122
216.831.6500
www.menorahpark.org

Menorah Park Foundation
27100 Cedar Road
Beachwood, Ohio 44122
216.595.7324

www.menorahparkfoundation.org